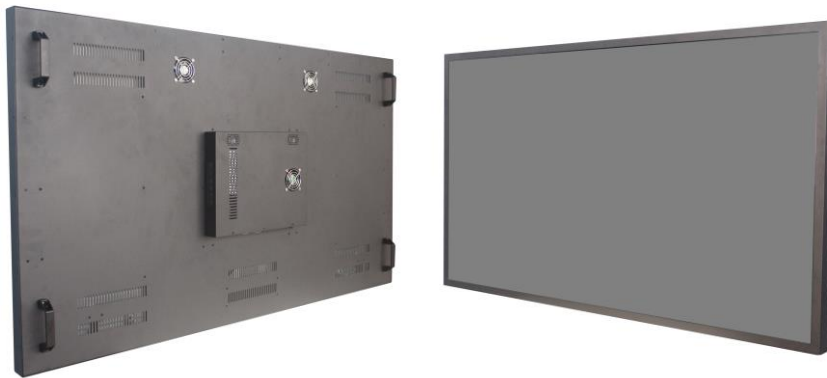


Industrial Chassis Monitor

Model # APM-55W



Features

- 55 inch wide screen 1920 x 1080 Ultra high resolution
- Support FHD with 1080p resolution
- HDMI, DVI, VGA, Audio input
- Side OSD control buttons to optimized display
- Heavy duty steel chassis
- Build in 2x 5watts stereo speakers
- VESA hole pattern

Option

- Composite video input
- BNC Loop-in-out
- Display port input
- 3G / HD / SD-SDI broadcast grade input
- Wide range DC power input
- AR Hardness glass
- Touch screen

LCD Characteristics :

Screen Size	55"
Backlight Type	LED
Resolution	1920*1080
Contrast Ratio	1600:1
Brightness (cd/m2)	360
View Angles (H/V)	178/178
Pixel Size (HxV) mm	0.3114x0.3114
Max. Color	16.7M
MTBF (Hrs.)	30,000

Input Signals:

HDMI	HDMI type A
DVI-D	DVI-D 24Pin Connector (Female)
VGA	D-SUB 15Pin Connector (Female)
Audio	3.5" Jack
Power Input	AC Inlet , 100-240VAC
Touch-USB (option)	USB A Type connector
Touch-RS232 (option)	D-SUB 9P connector (Female)

User Controls Interface:

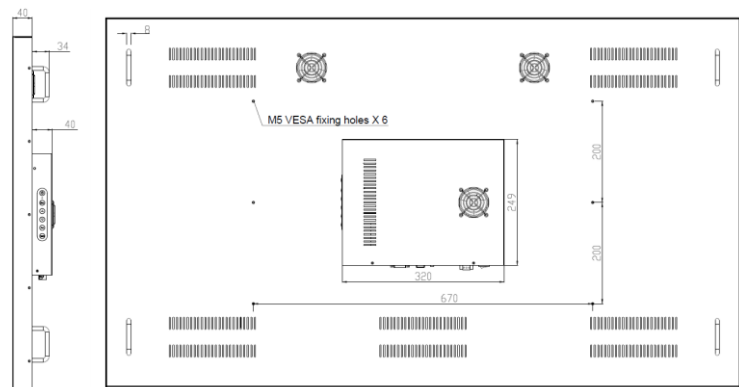
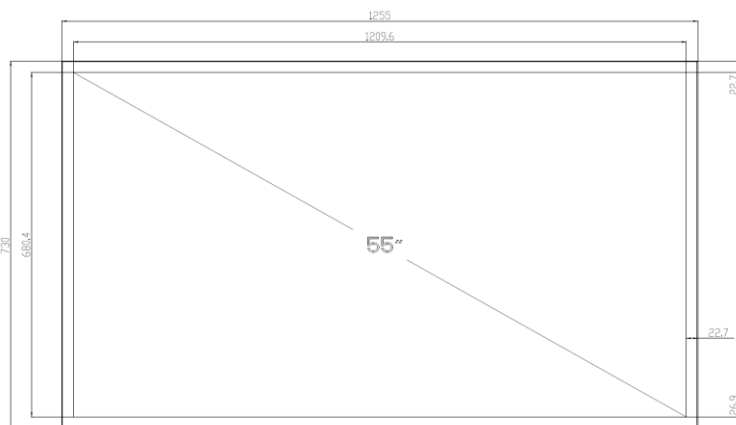
Power ON / OFF Button
Power Mode Status LED indicator
OSD (On Screen Display) Buttons

Power Specifications :

AC Power Input	Internal Power board , 100-240V AC Input
Wide Range DC Power Input (option)	Screw Type Terminal Block with internal wide Range DC power supply

Mechanical and Environment:

Construction	Metal Housing
Operating Temperature	0 - 50 deg. C
Operating Humidity	10% - 90% (non -condensing)
Anti-Vibration	5 - 500 Hz / 1 Grms PTP
Anti-Shock	15G / Peak (11 ms)
Physical Dimension (WxHxD)	1255 x 730 x 80 (mm)
Packing Dimension (WxHxD)	1365 x 190 x 840 (mm)
Net Weight / Gross Weight	28 / 34.5 (KGs)
Certification and Approvals	CE / FCC / RoHs



SAIS - Sacasa Industries & Systèmes
 8 rue André Marie Ampère
 28500 Vernouillet - France
 09 70 440 600 - (+ 33) 970 440 600
<https://clavier-ecran-rackable.fr>
contact@sacasa.info

