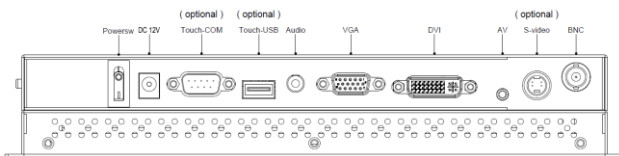
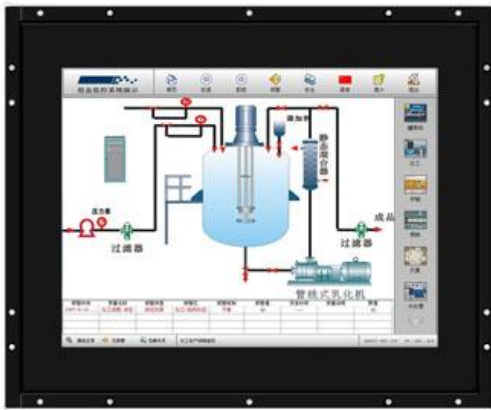


# High Brightness Open Frame Panel Monitor (Small Size) Model # IPMBX -10HB



## Features

- 10.4 inch XGA TFT LCD panel support 1024 x 768 resolution
- Open frame structure with strengthen glass
- DVI-D, VGA, Audio input
- Rugged construction and modularized design
- OSD control keys to optimize the display
- Build in 2x 2watts stereo speakers
- Surface mount
- Meet standard VESA hole, support desk stand / wall mount / Swing Arm mounting

## Option

- Composite video input
- BNC Loop-in-out
- HDMI or Display port input
- 3G / HD / SD-SDI broadcast grade input
- DC 9~36 V power input
- AR Hardness glass
- Touch screen

### LCD Characteristics :

Screen Size	10.4"
Backlight Type	CCFL
Resolution	1024x768
Contrast Ratio	500:1
Brightness ( cd/m2 )	1000
View Angles ( H/V )	140/120
Pixel Size ( HxV ) mm	0.20625x0.20625
Max. Color	262K
MTBF ( Hrs. )	30,000

### Mechanical and Environmental:

Mounting	Surface mount, VESA Mount
Construction	Heavy duty steel chassis
Operating Temperature	0 - 50 deg. C
Operating Humidity	5% - 95% ( non -condensing )
Anti-Vibration	5 - 500 Hz / 1 Grms PTP
Anti-Shock	15G / Peak ( 11 ms )
Physical Dimension ( WxHxD )	279 x 229 x 46 ( mm )
Packing Dimension ( WxHxD )	394 x 330 x 175 ( mm )
Net Weight / Gross Weight	3.5 / 5 ( KGs )
Certification and Approvals	CE / FCC / RoHS

### Input Signals:

DVI-D	DVI-D 24Pin Connector (Female)
VGA	D-SUB 15Pin Connector (Female)
Audio	3.5" Jack
Power Input	12V DC jack with hanger
Touch-USB ( option )	USB A Type connector
Touch-RS232 ( option )	D-SUB 9P connector ( Female )

### Power Specifications :

AC Power Input	External Power Adapter , 100-240V AC Input
Wide Range DC Power Input ( option )	Screw Type Terminal Block with internal wide Range DC 9-36V power module

### User Controls Interface:

Power ON / OFF via Front Button
Power Mode Status LED indicator
OSD ( On Screen Display ) Buttons

